

DR. S. G. BALAMURUGAN M.Ch,
SURGICAL ONCOLOGIST



GURU HOSPITAL

NEW CANCER TREATMENT WITH NEW TECHNOLOGY

Pandikovil Ring Road, Madurai

LAP. RADICAL HYSTERECTOMY



Dr. S.G. Balamurugan

M.S , M.Ch, FRCS., Ph.D.,

- **SURGICAL ONCOLOGIST & LAP SURGEON, GURU HOSPITAL, MADURAI,**
- **ADJUNCT PROFESSOR THE TN DR M.G.R MEDICAL UNIVERSITY, CHENNAI,**
- **SECRETARY, ASSOCIATION OF SURGEON OF INDIA, TAMILNADU CHAPTER**
- **STATE. SECRETARY, NURSING HOME BOARD – IMA, TAMILNADU**



HYSTERECTOMY - DIFFERENCE

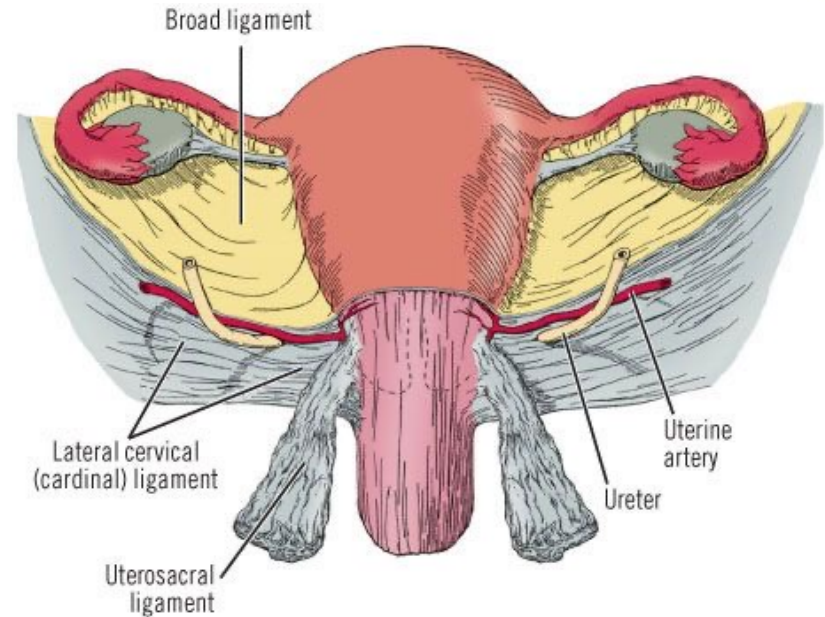
• BY DIVIDING ATTACHMENTS - LEGEMENTS & VESSELS

LIGAMENT S

- 1) ROUND LIGAMENT
- 2) BROAD LIGAMENT
- 3) CARDINAL LIGAMENT
- 4) UTEROSACRAL LIGAMENT

VESSELS

- 1) UTERINE ARTERY
- 2) OVARIAN VESSELS



PAN HYSTERECTOMY





உன்னால் முடியும்

உன்னால் முடியும்

RADICAL HYSTERECTOMY -CONCERN

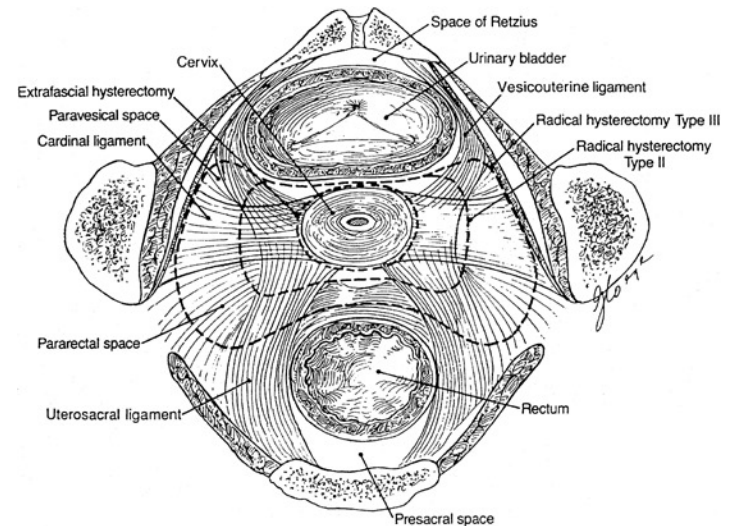
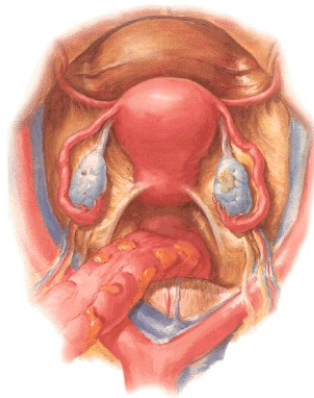


ONCOLOGY CONCERN

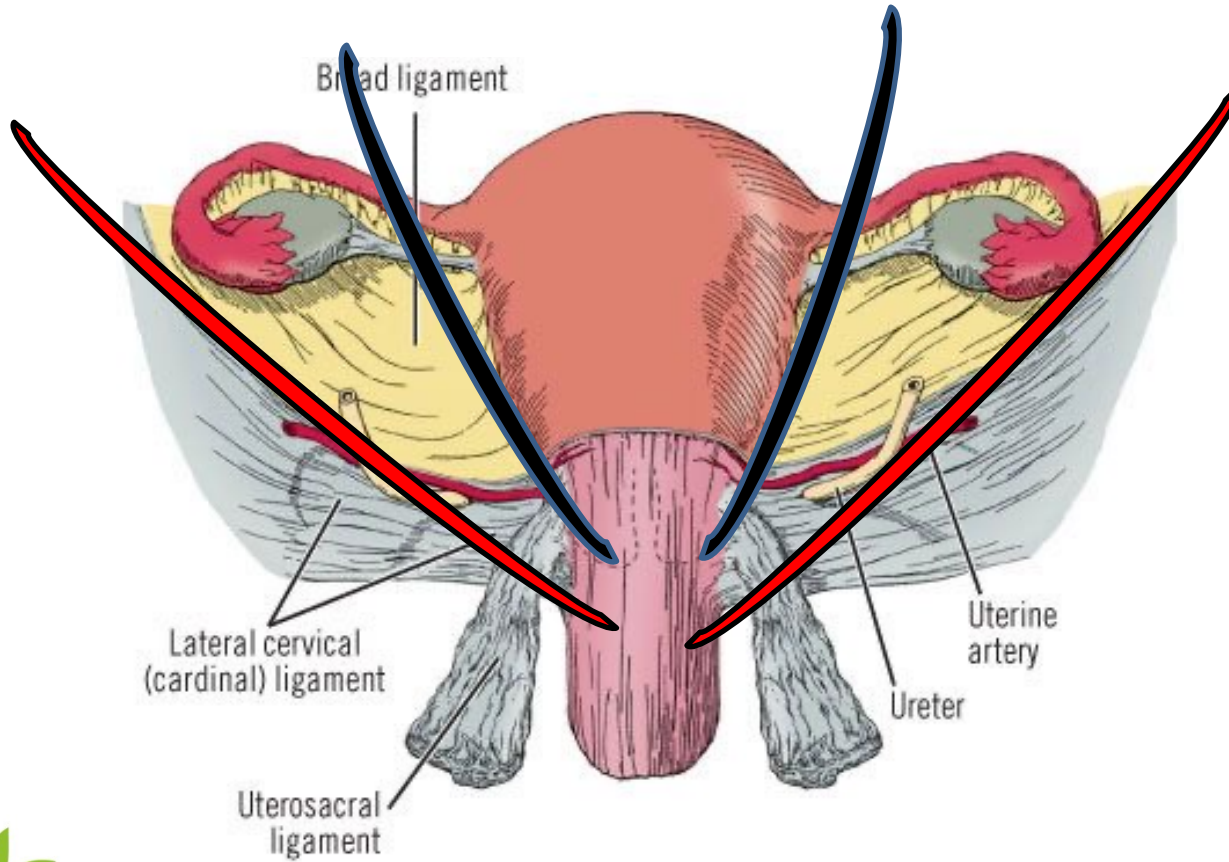
- Achieving R0 Resection –

Excision of tumor with wide clearance & lymphadenectomy

Pelvic Viscera of Female
Superior View - Peritoneum Intact

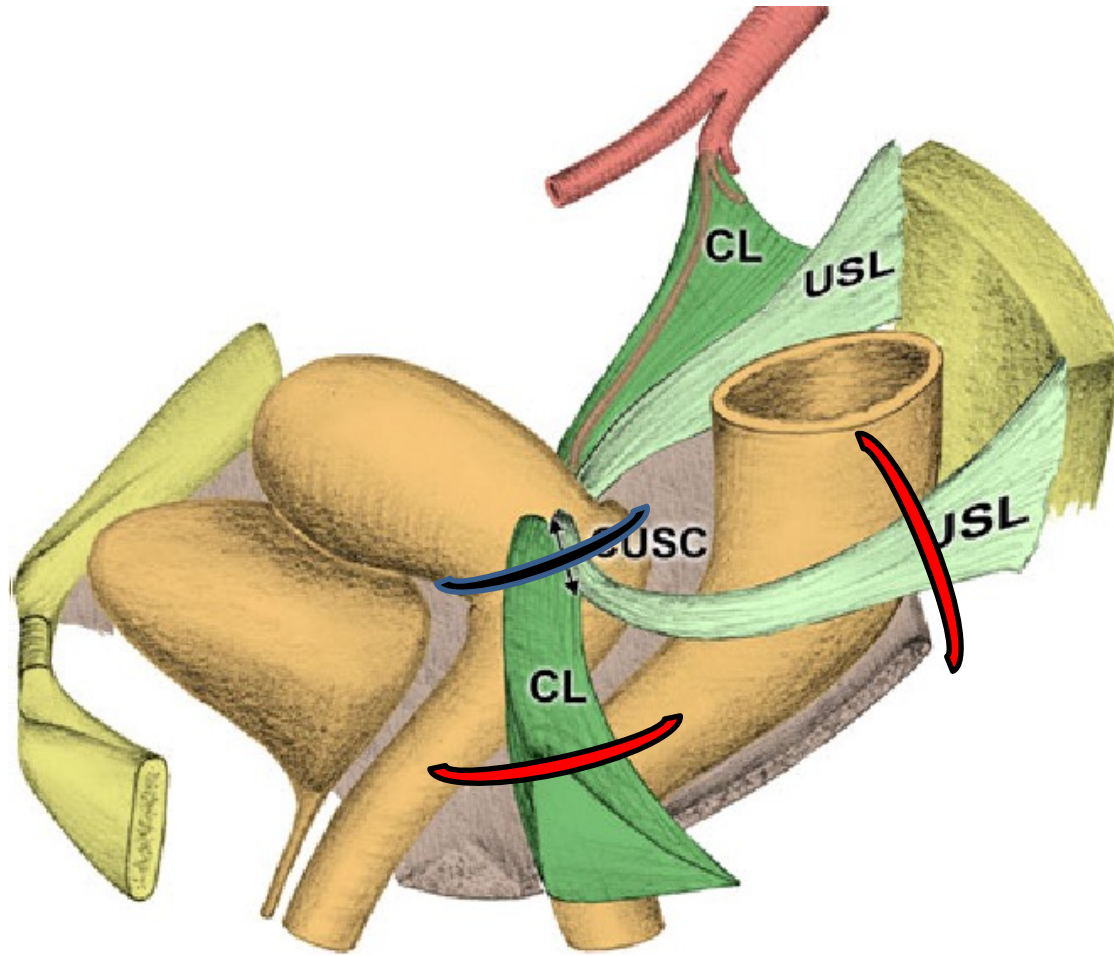


BENIGN vs MALIGNANT



உன்னால் முடியும்

உன்னால் முடியும்



உன்னால் முடியும்

உன்னால் முடியும்

WERTHIMS HYSTERECTOMY - STEPS

- Ureteral dissection
- Ligation of uterine artery at their origin
- Resection of parametria
- Resection of vagina
- Pelvic nodal dissection



PELVIC ANATOMY

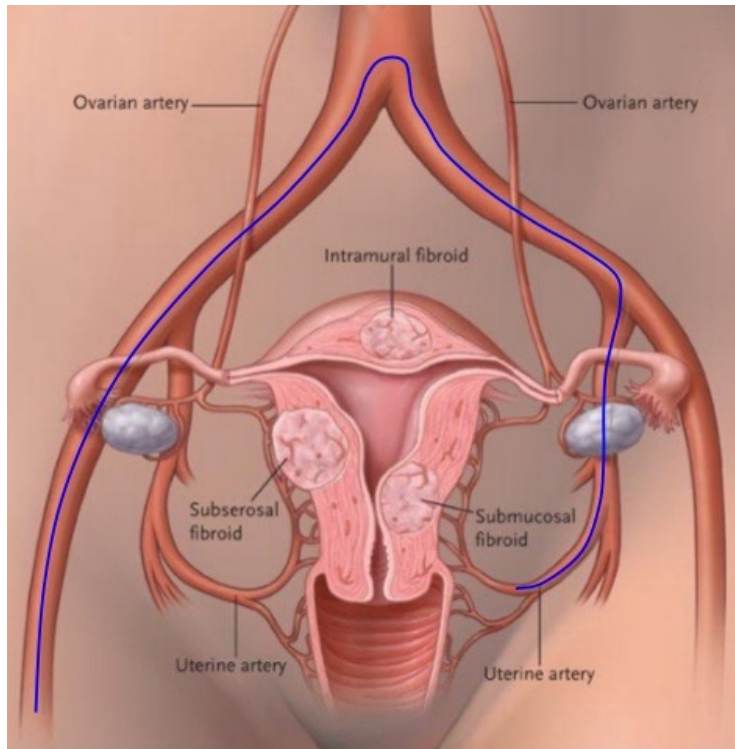


VASCULAR ANATOMY

- The common iliac artery bifurcation is at the level of sacral promontory
- The ureter crosses the common iliac vessels from lateral to medial side at this level.



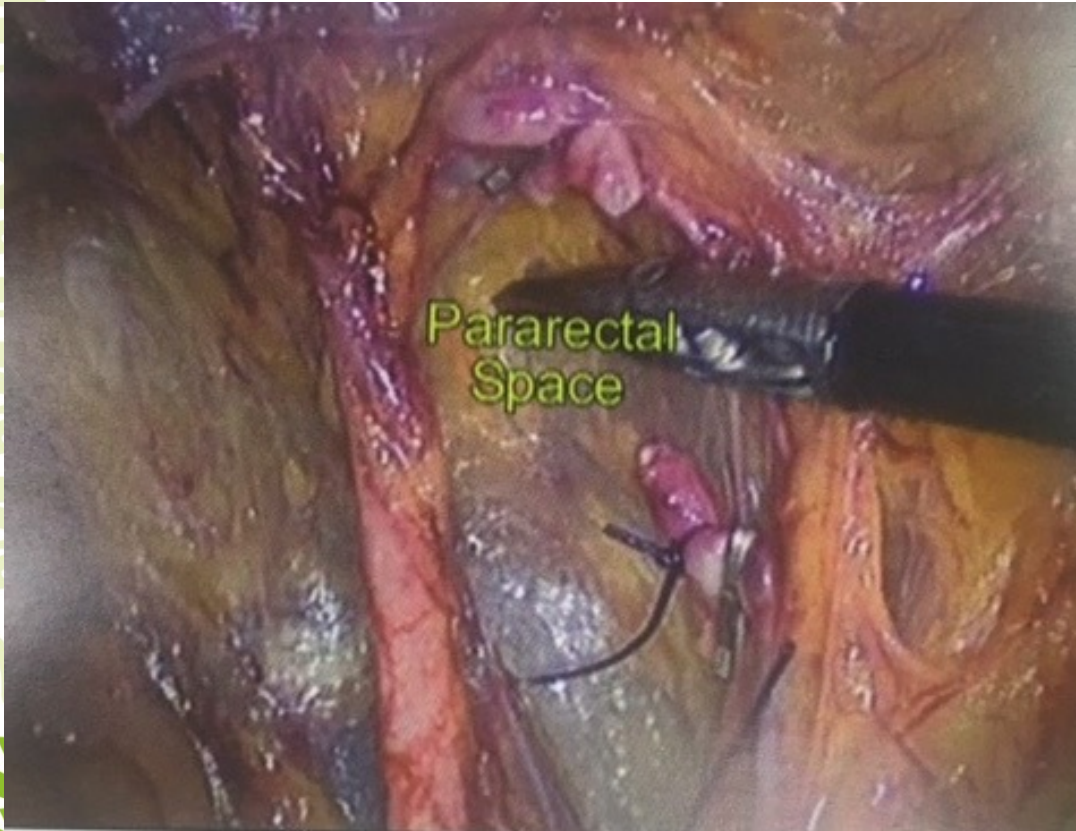
VASCULAR ANATOMY



- **The uterine artery** is the first branch of anterior division of internal iliac artery .
- It originates about 6”(six inches) distal to the bifurcation of common iliac artery.
-



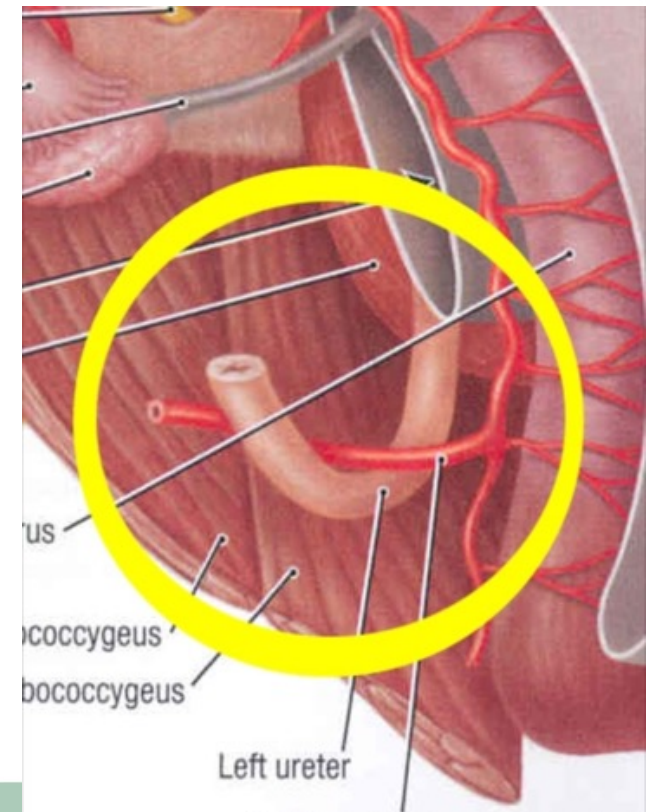
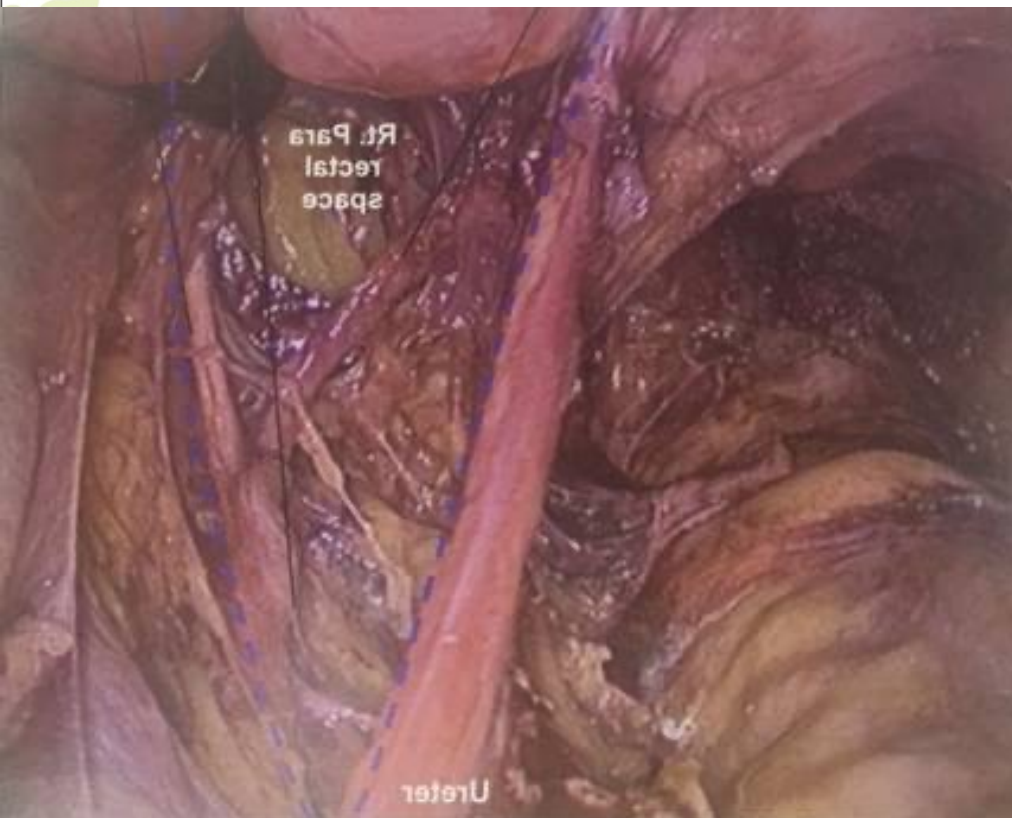
THE PARARECTAL SPACE



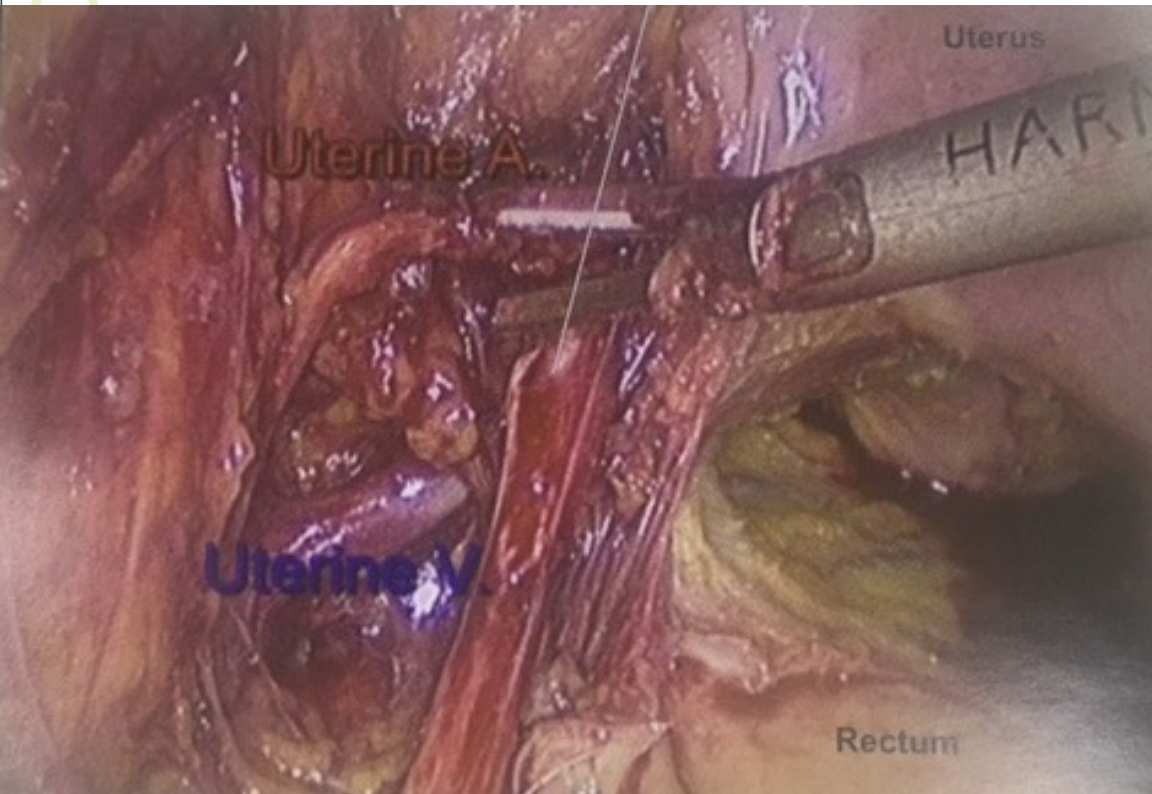
The pararectal space lies lateral to the ureter and medial to the internal iliac vessels. It continues downwards upto the levator ani muscle. The only structures crossing this space are the uterine artery and vein.

URETER Vs VESSELS

- The uterine artery traverses the pararectal space and crosses above the ureter from lateral to medial side to enter the uterus.



URETER Vs VESSELS

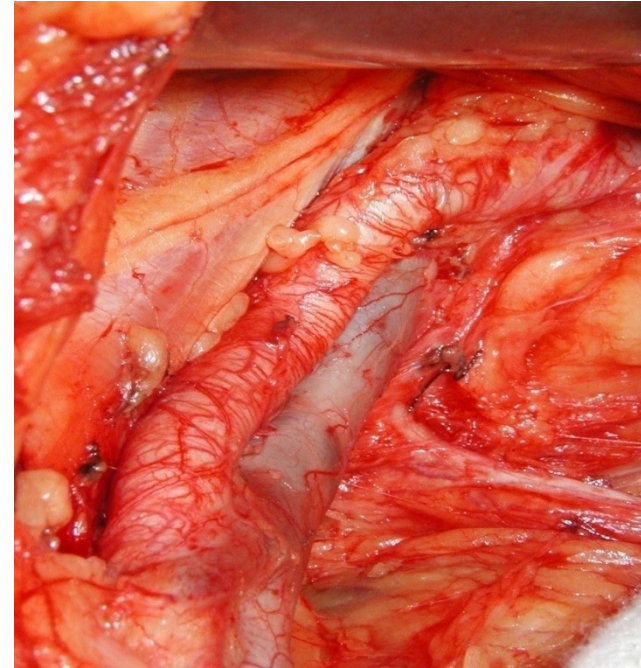


- The uterine vein, contrary to popular belief, comes from below the ureter to join the internal iliac vein. Thus, the ureter lies in the fork between the uterine artery above and the uterine vein below.



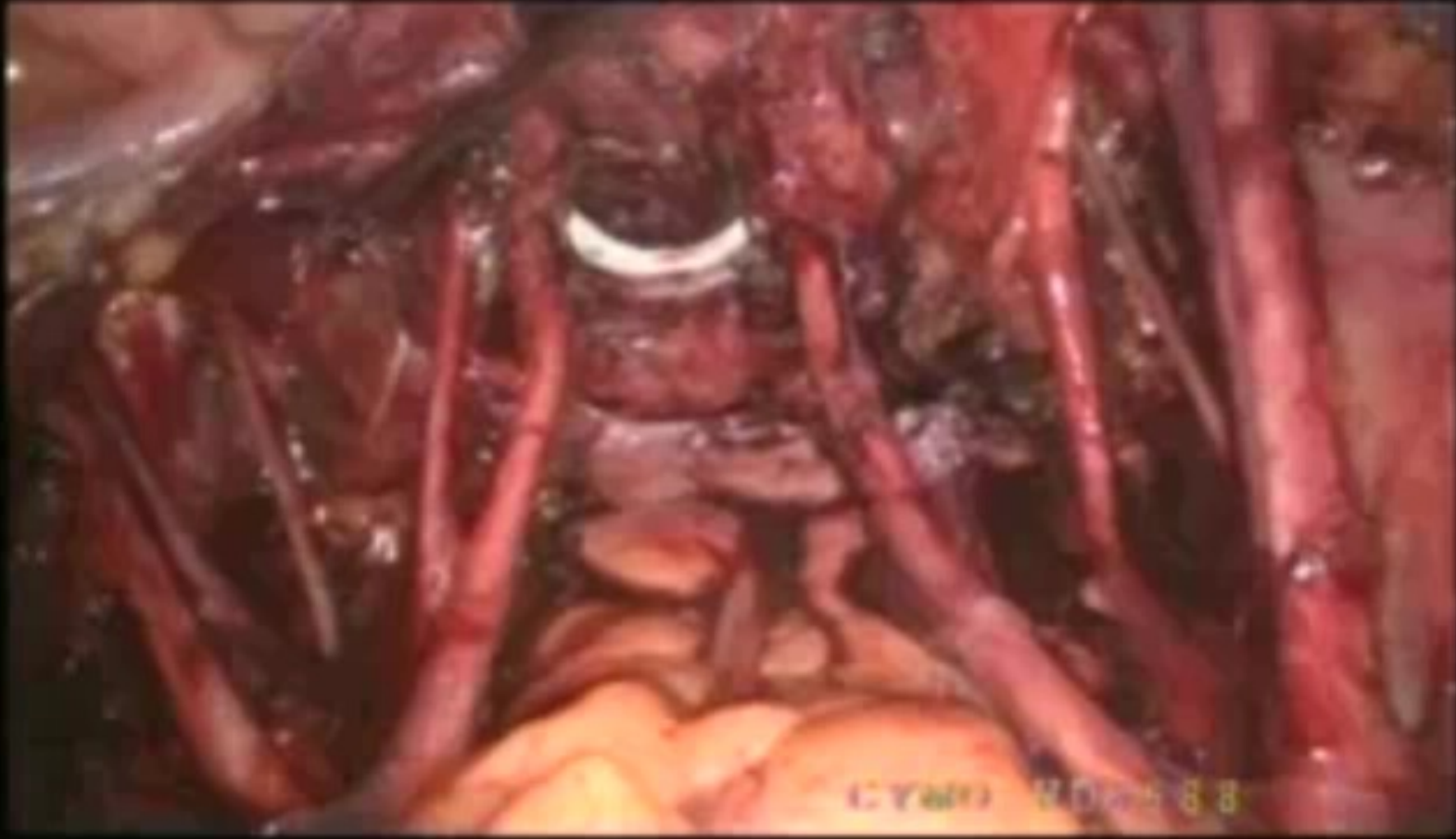
PELVIC NODAL DISSECTION

- Superiorly -upto bifurcation of com. iliac vessels
- Inferiorly -upto deep circumflex iliac vein
- Laterally -upto genitofemoral n.
- Medially -upto obturator n.



COMPLETENESS OF SURGERY

- All tubular structure to be documented



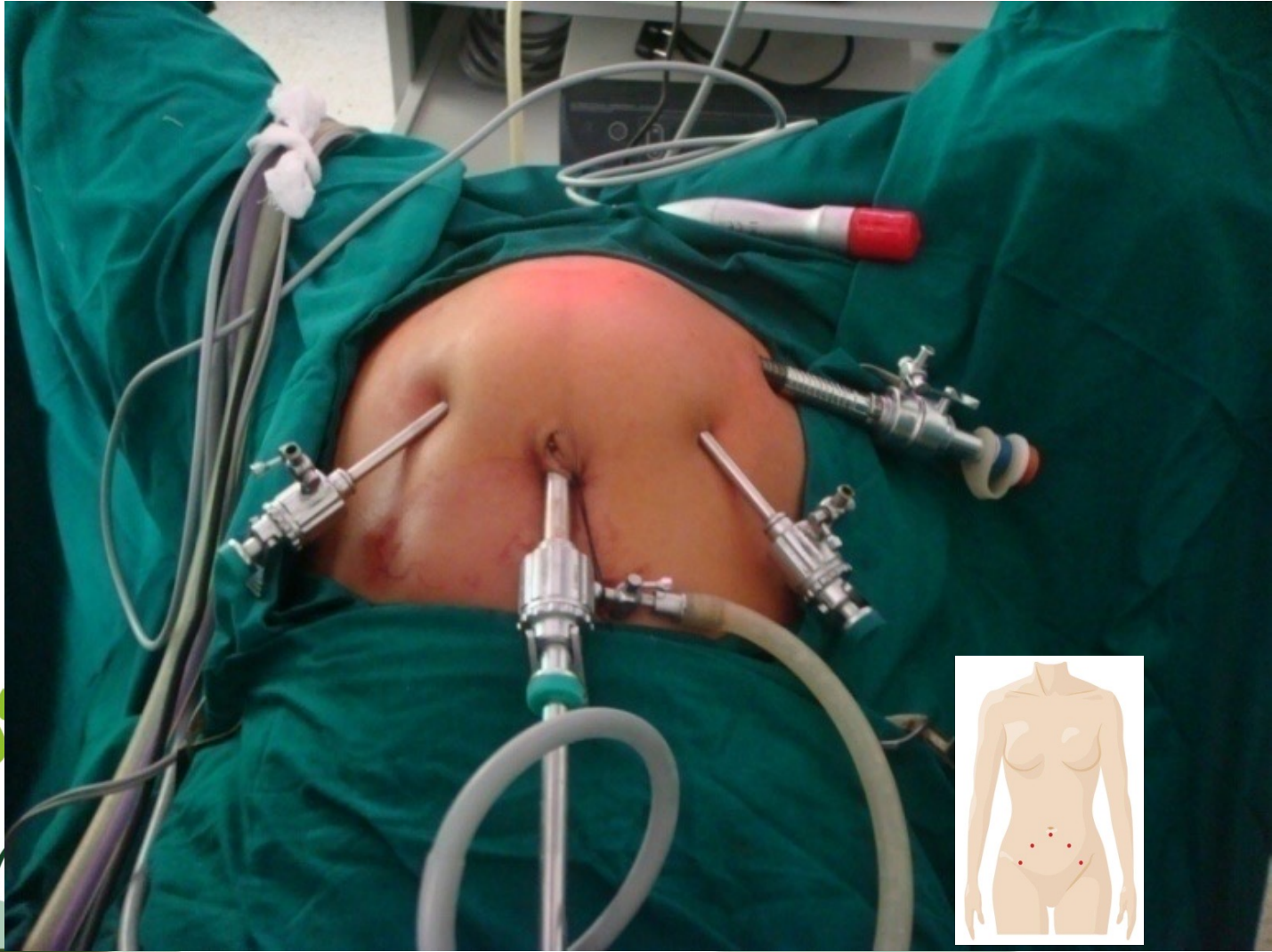
TECHNIQUES



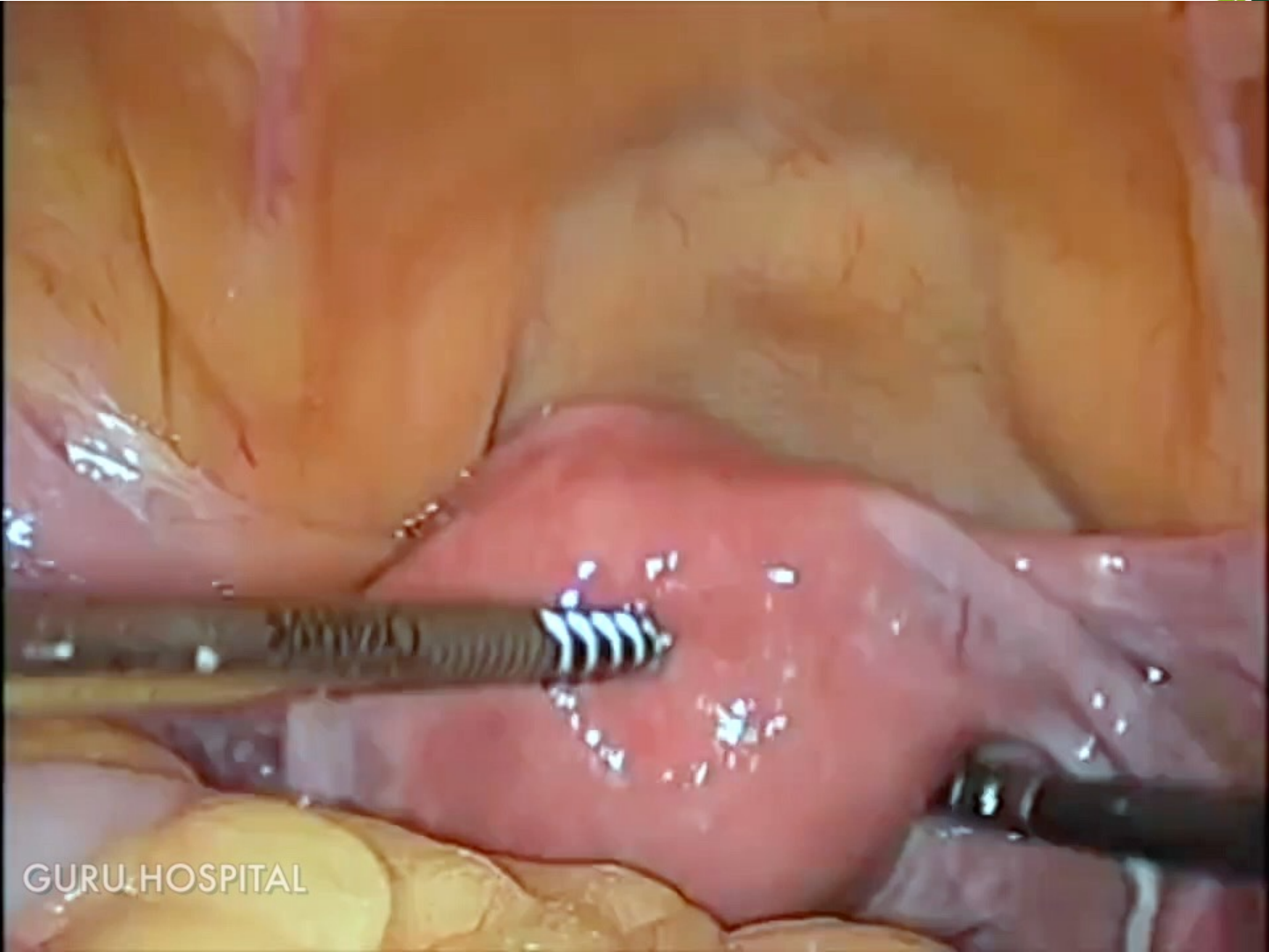
Under ETGA, patient is placed in modified Lloyd davis position.



PORTS



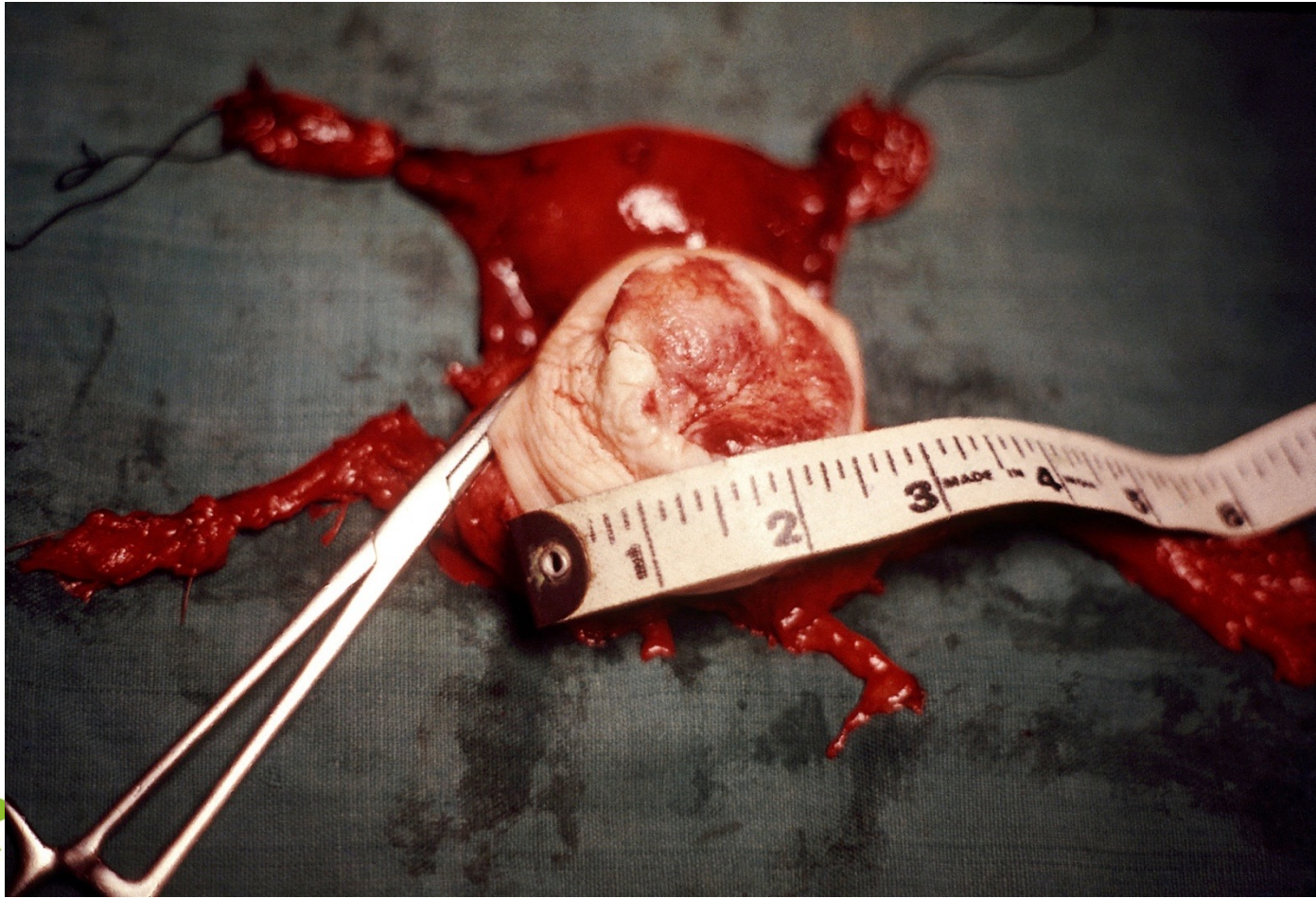
உன்னால் முடியும்



GURU.HOSPITAL



CLEARANCE DISTAL

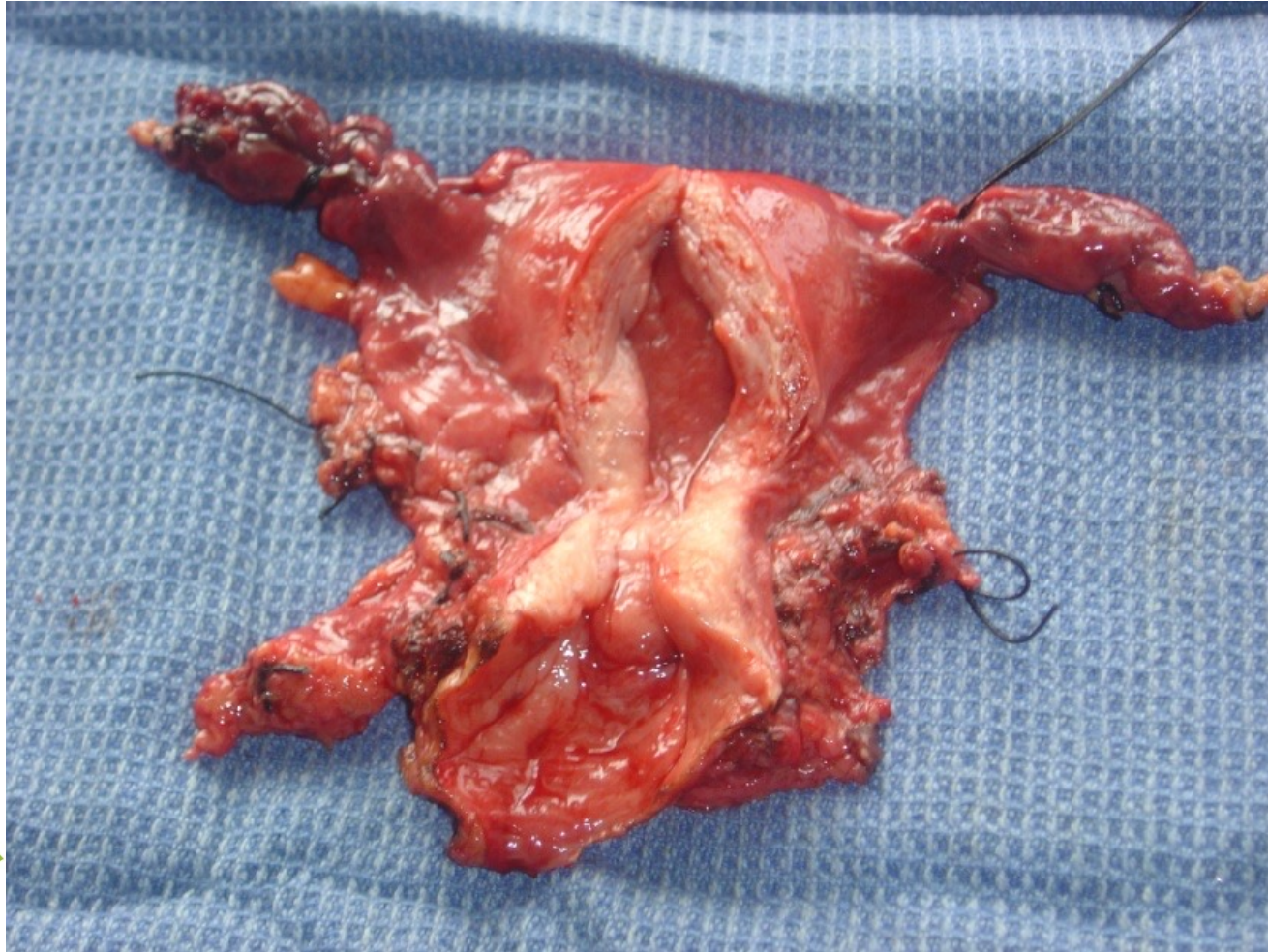


உன்னால் முடியும்

உன்னால் முடியும்

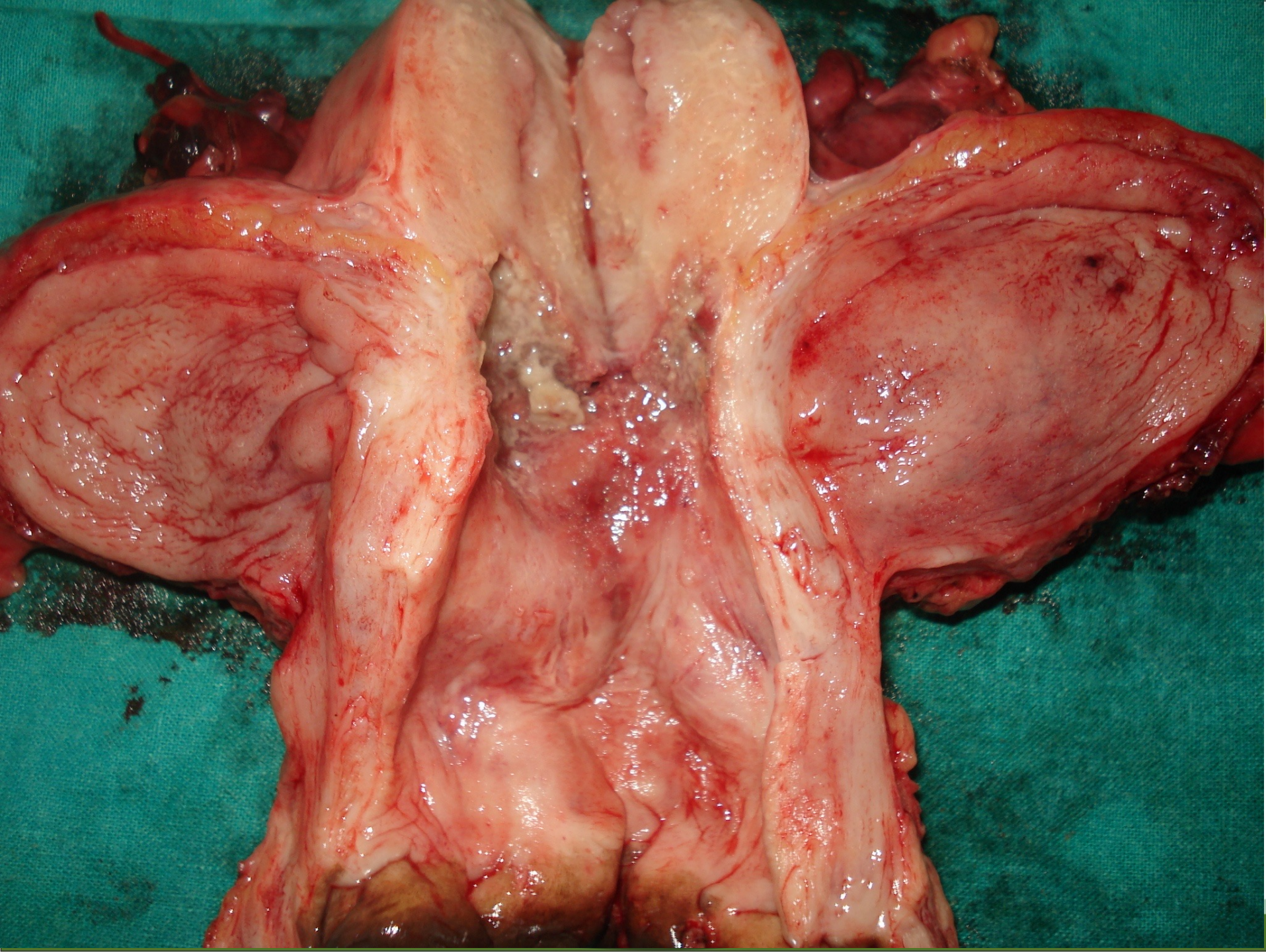
உன்னால் முடியும்

CLEARANCE LATERAL



உன்னால் முடியும்

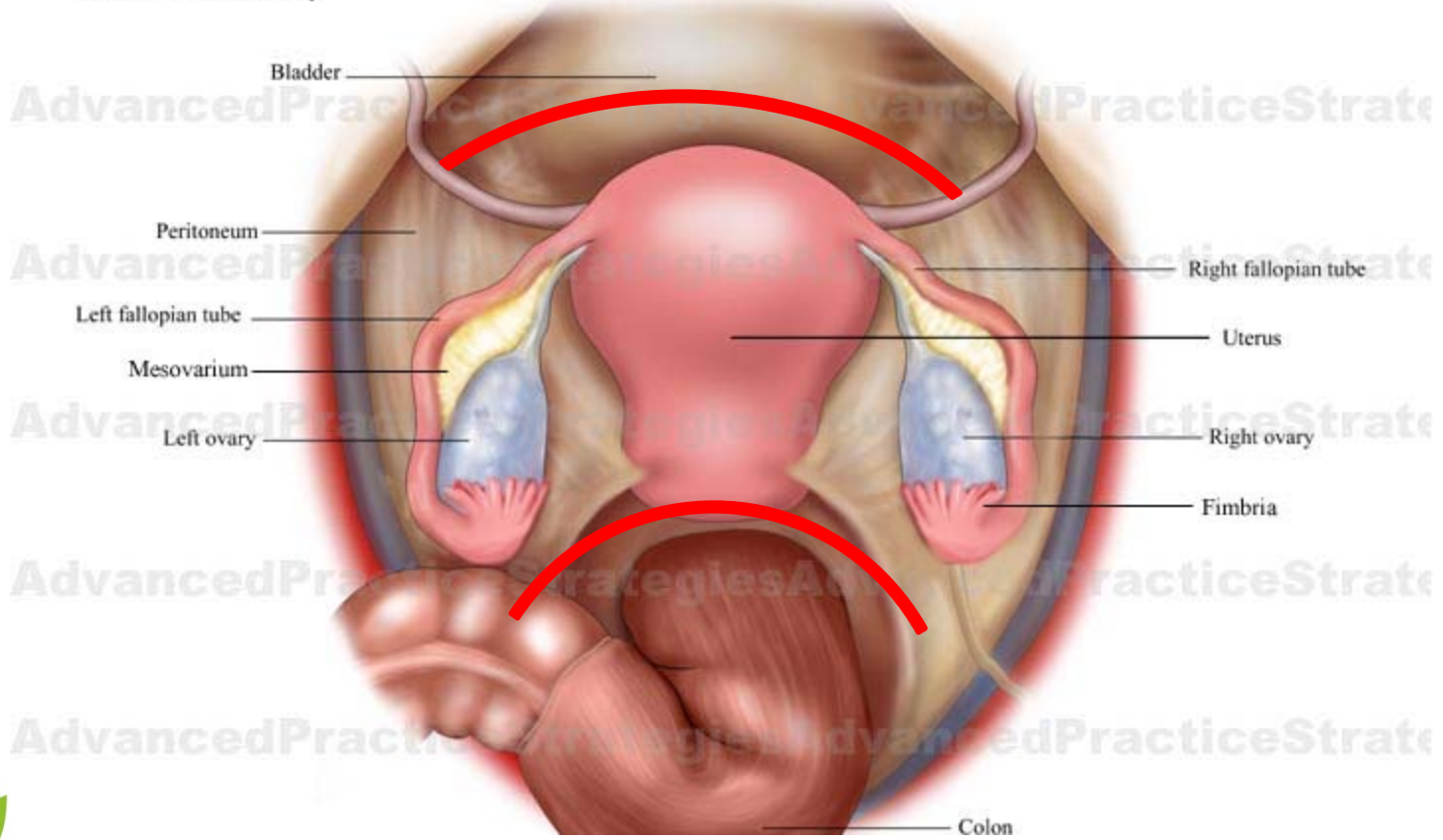
உன்னால் முடியும்



TRICK OF SURGERY



Normal Anatomy

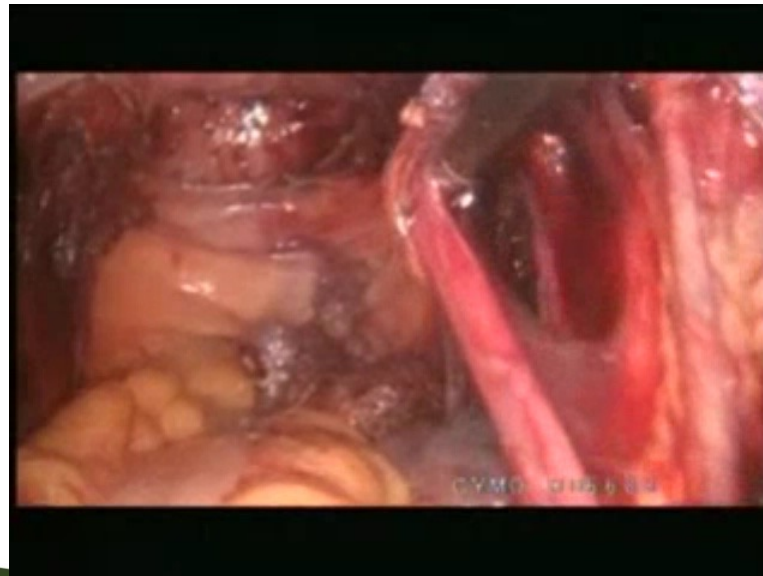


உன்னால் முடியும்

உன்னால் முடியும்

URETER

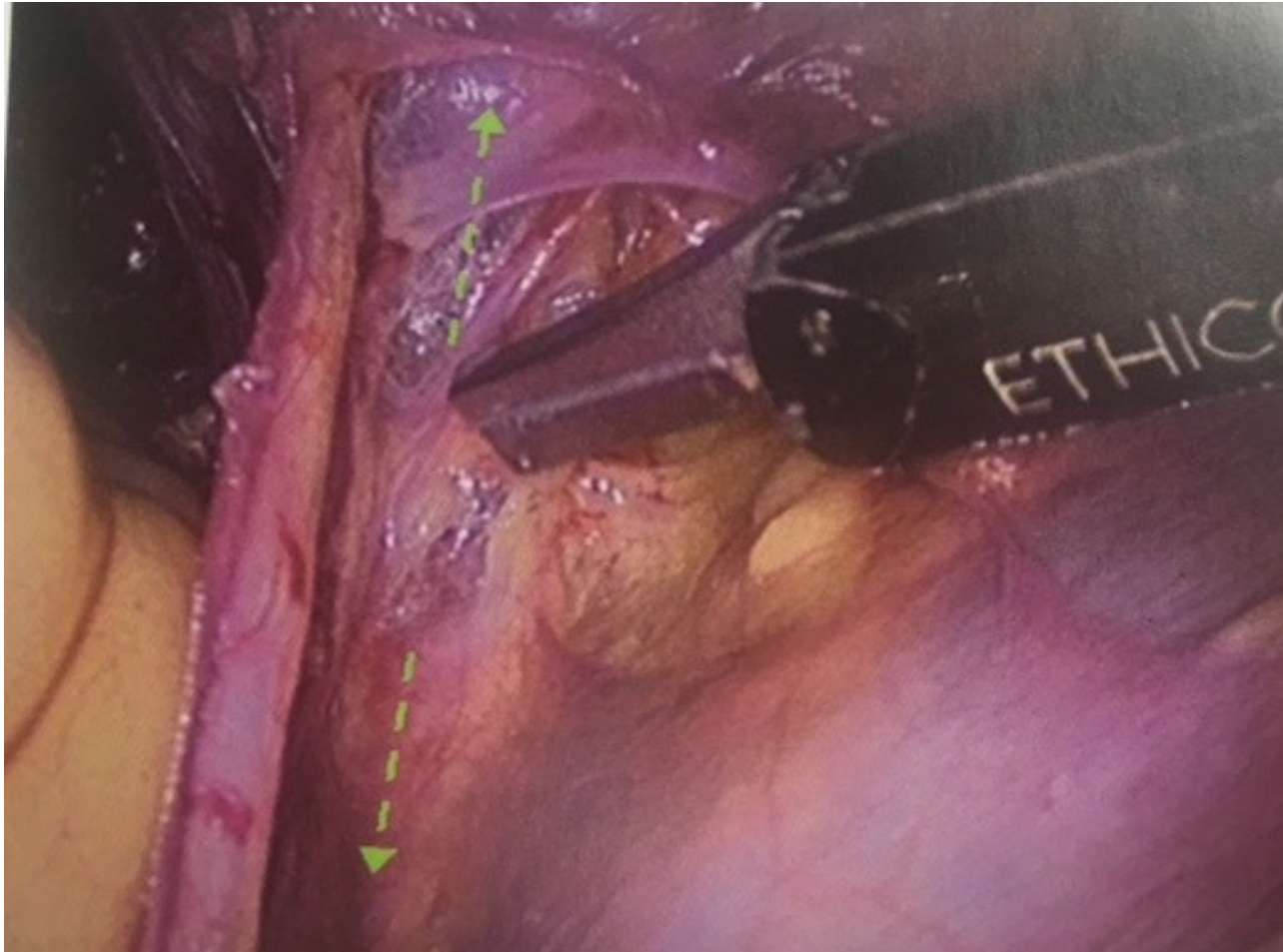
- The blood supply of the ureter is parallel to its course and so denudation of the ureter during surgery is not advisable. The uterine artery gives out a small branch to the ureter.



FAT BELONGS TO RECTUM



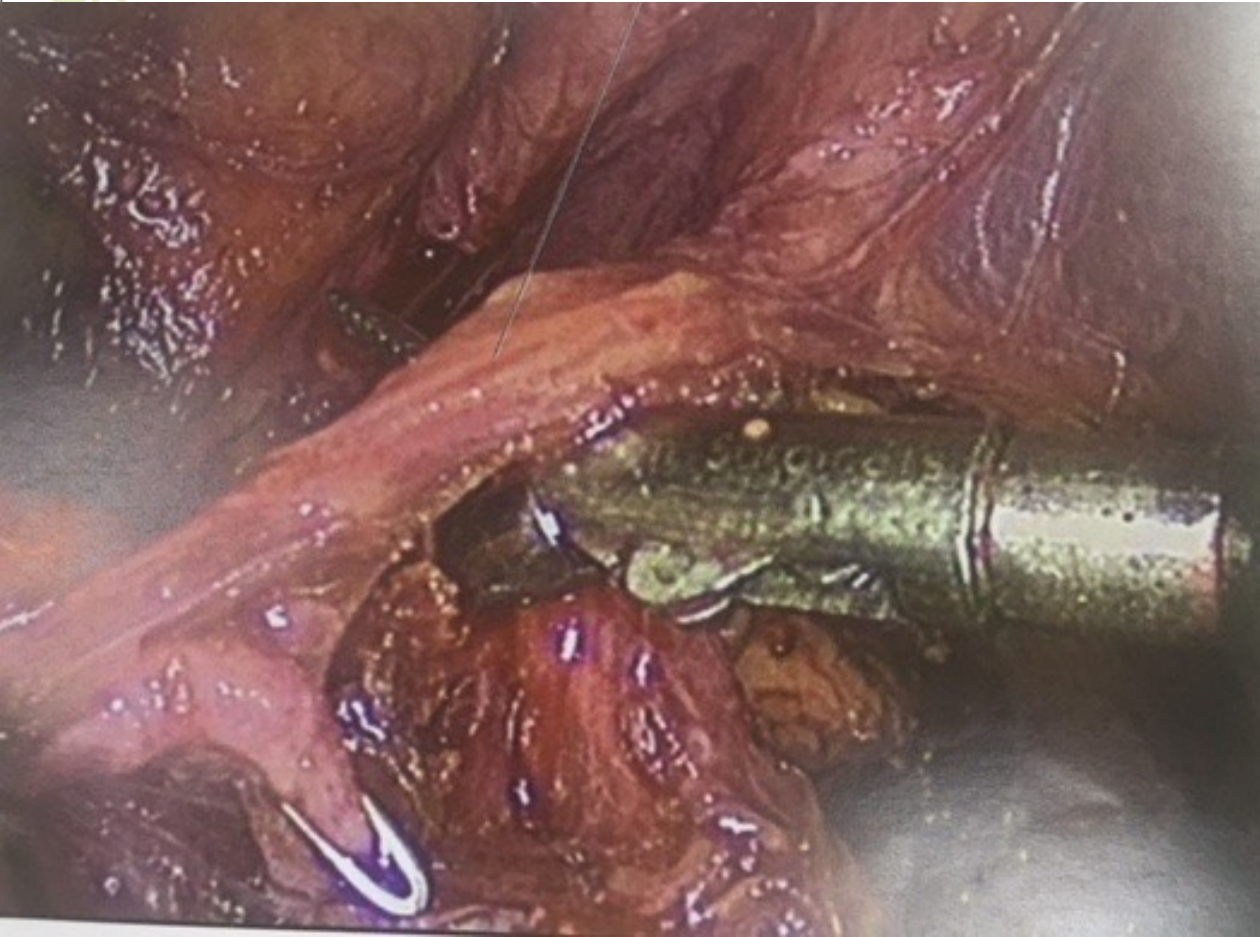
Dissection Always Parallel to Ureter



உன்னால் முடியும்

உன்னால் முடியும்

SAFE DISSECTION AT URETERIC TUNNEL



Two small veins run in the endopelvic fascia, which forms the roof of ureteric tunnel.



ONCOLOGIST VIEW

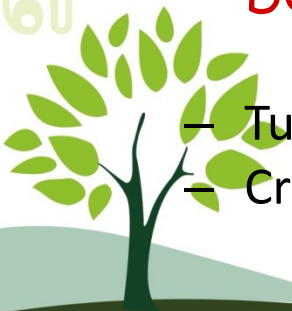
ONCEPTS - DO'S and DONT'S

DO'S

- Surgical planes
- Tumor handling
- Tumor margins
- Node count
- Ligating artery at its origin

– DONT'S

- Tumor spill
- Crushing of lymph node



Thank You



உன்னால் முடியும்

உன்னால் முடியும்

உன்னால் முடியும்